

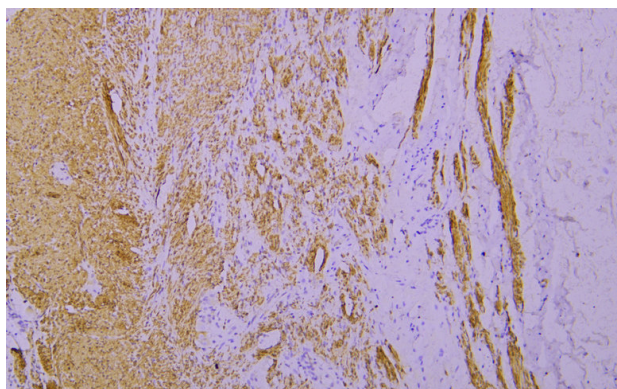


Calponin-1 rabbit mAb(ABT145R)

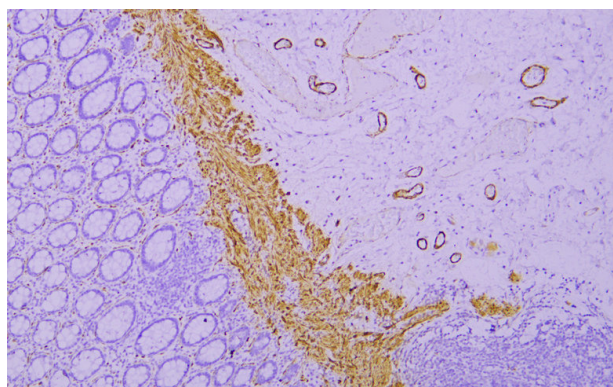
Catalog No	YP-Ab-15515
Isotype	IgG
Reactivity	Human
Applications	IHC;IF
Gene Name	CNN1
Protein Name	Calponin-1
Immunogen	Synthesized peptide derived from human Calponin-1
Specificity	This antibody detects endogenous levels of Calponin-1 at Human
Formulation	Liquid in PBS containing 50% glycerol, 0.5% BSA and 0.02% sodium azide.
Source	Polyclonal, Rabbit,IgG
Purification	The antibody was affinity-purified from Cell supernatant by affinity-chromatography using specific immunogen.
Dilution	IHC-p 1:5-1:10. IF 1:50-200
Concentration	1 mg/ml
Purity	≥90%
Storage Stability	-20°C/1 year
Synonyms	Calponin-1 (Basic calponin;Calponin H1, smooth muscle)
Observed Band	
Cell Pathway	cytoskeleton,focal adhesion,
Tissue Specificity	Smooth muscle, and tissues containing significant amounts of smooth muscle.
Function	function:Thin filament-associated protein that is implicated in the regulation and modulation of smooth muscle contraction. It is capable of binding to actin, calmodulin, troponin C and tropomyosin. The interaction of calponin with actin inhibits the actomyosin Mg-ATPase activity.,similarity:Belongs to the calponin family.,similarity:Contains 1 CH (calponin-homology) domain.,similarity:Contains 3 calponin-like repeats.,subunit:Part of cGMP kinase signaling complex at least composed of ACTA2/alpha-actin, CNN1/calponin H1, PLN/phospholamban, PRKG1 and ITPR1.,tissue specificity:Smooth muscle, and tissues containing significant amounts of smooth muscle.,
Background	
matters needing attention	Avoid repeated freezing and thawing!

**Usage suggestions**

This product can be used in immunological reaction related experiments. For more information, please consult technical personnel.

Products Images

Immunohistochemical analysis of paraffin-embedded human Appendix. 1, Antibody was incubated at 4° overnight. 2, Citrate buffer of pH6.0 was used for antigen retrieval. 3, Secondary antibody was diluted at 1:200(room temperature, 30min).



Immunohistochemical analysis of paraffin-embedded human Colon. 1, Antibody was incubated at 4° overnight. 2, Citrate buffer of pH6.0 was used for antigen retrieval. 3, Secondary antibody was diluted at 1:200(room temperature, 30min).